



ASSEMBLY INSTRUCTION

Locking 3 pole Power Connector System

Cable Connector RCAC3I-G-000 / RCAC3O-G-000

A Put bushing (1) and chuck (2) onto the cable.

B Prepare cable as shown.

C Insert the wires into the terminals and fasten the clamping device by help of a screw driver (POZIDRIV® #1).

D Push insert (1) and chuck (2) into housing (pay attention to the guiding keyway).

E Fasten bushing by use of a fork wrench 3/4", recommended Torque 2.5 Nm (1.8 lb-ft).

Wiring:

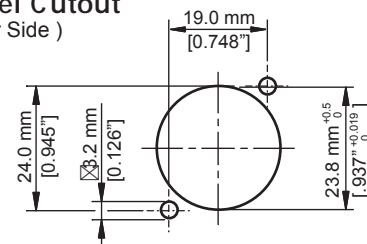
Cable O.D. with white chuck: 6.0 mm [0.236"] - 12 mm [0.472"]
with black chuck: 9.5 mm [0.374"] - 15 mm [0.59"]

Receptacle RRAC3I-G-000 / RRAC3O-G-000

for flat quick-connect receptacles 0.187" x 0.020"

Attention: Maximum allowable torque 0.5 Nm.

Panel Cutout (Rear Side)



Neutrik AG LI T: +423 / 237 24 24 F: +423 / 232 53 93
Neutrik USA Inc. USA T: +1 704 / 972 3050 F: +1 704 / 438 9202
Neutrik (UK) Ltd. UK T: +44 1983 / 811 441 F: +44 1983 / 811 439
Neutrik Vertriebs GmbH DE/NL/AT/DK T: +49 8131 / 280 890 F: +49 8131 / 280 830

Neutrik France FR T: +33 1 / 4131 6750 F: +33 1 / 4131 0511
Neutrik Tokyo Ltd. JP T: +81 3 / 3663 4733 F: +81 3 / 3663 4796
Neutrik Hong Kong Ltd. HK T: +852 / 2687 6055 F: +852 / 2687 6052

Draft. Nr.: BDA 000 | Update: 2021-01-20 | Data subject to change without prior notice. © 2021 REAN®. REAN® is registered trademark of Neutrik AG. ALL RIGHTS RESERVED.